

WHY IS 1.5°C THE LIMIT?

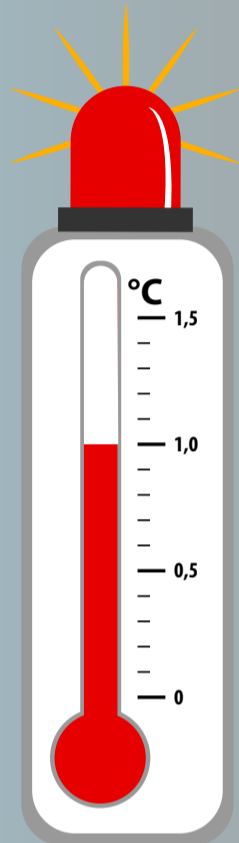


Global warming caused by human activities reached approximately 1°C over the past 170 years, increasing at 0.2°C per decade

Pre-industrial Era



Global average temperature = 14°C

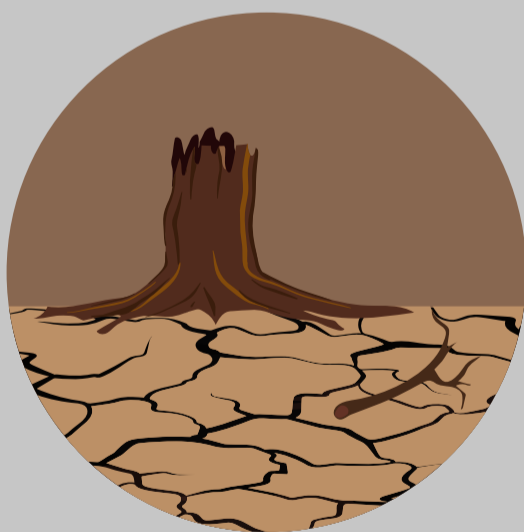


Industrial Era



Global average temperature = 15°C

A ONE-DEGREE GLOBAL CHANGE IS SIGNIFICANT



MORE

heatwaves, extreme rainstorms, water shortages and drought, greater economic losses, lower crop yields, higher sea levels, destruction of coral reefs, diseases and illness due to extreme heat

**Scientists warn that
TEMPERATURE RISES ABOVE 1.5 DEGREES
WILL LEAD TO CATASTROPHE**